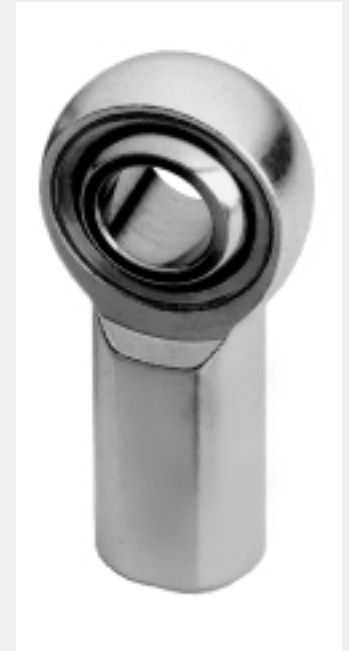
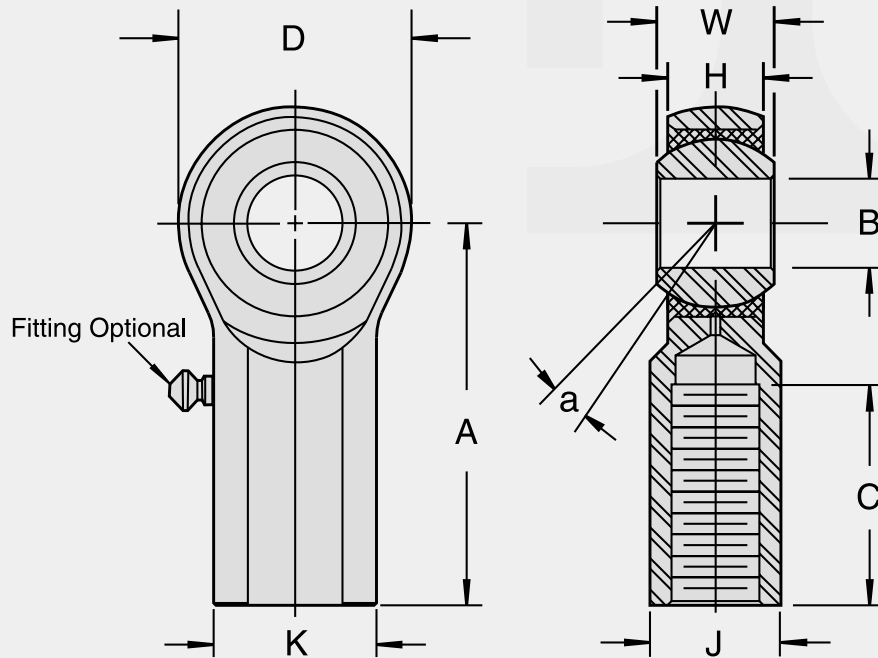


TSMX

3-Piece, Metal to Metal,
Heavy Duty



Part Number		B +0.025 -0.005	W +0.00 -0.005	H ±.015	A ±.015	D ±.010	K ±.010	J ±.010	REF	C +0.062 -0.031	UNF-2B	a°	Ultimate Radial Static Load Capacity (Pounds)	Approx. Weight (Pounds)
Right Hand	Left Hand	Ball Bore	Ball Width	Housing Width	Centerline Length	Head Diameter	Shank Diameter	Wrench Flat	Ball Diameter	Thread Length	Thread Size	Misalign Angle		
TSMX3	TSMXL3	.1900	.312	.250	1.062	.625	.406	.312	.437	.500	10-32	13	3,733	.038
TSMX4	TSMXL4	.2500	.375	.281	1.312	.750	.469	.375	.500	.687	1/4-28	16	6,190	.059
TSMX5	TSMXL5	.3125	.437	.344	1.375	.875	.500	.437	.625	.687	5/16-24	14	7,639	.092
TSMX6	TSMXL6	.3750	.500	.406	1.625	1.000	.687	.562	.719	.812	3/8-24	12	9,544	.152
TSMX7	TSMXL7	.4375	.562	.437	1.812	1.125	.750	.625	.812	.937	7/16-20	14	10,285	.198
TSMX8	TSMXL8	.5000	.625	.500	2.125	1.312	.875	.750	.937	1.062	1/2-20	12	15,336	.329
TSMX10	TSMXL10	.6250	.750	.562	2.500	1.500	1.000	.875	1.125	1.375	5/8-18	16	17,955	.477
TSMX12	TSMXL12	.7500	.875	.687	2.875	1.750	1.125	1.000	1.312	1.562	3/4-16	14	28,081	.723

MATERIALS

Ball	Body	Race
52100 Steel	Heat Treated	Heat Treated
Rc 56 Min.	Alloy Steel	Alloy Steel
Hard Chrome Plated	Zinc Plated	Zinc Plated
	Clear Chromate	Clear Chromate
	Treated	Treated

NOTES:

1. For standard zerkl lubrication fitting add "Z" to suffix. Example: TSMX8Z
2. This series is also available in a studded configuration. (Refer to chart in this catalog on page 66) Specify by adding "S" to suffix. Example: TSMX8S